



- World-class, low-cost GEMCO manganese mine at Groote Eylandt produces more than 15% of global production, and has been in operation since 1965.
- Mineralisation at Groote Eylandt comprises flat-lying oolitic and pisolitic sedimentary manganese within the Cretaceous Walker River Formation of the Carpentaria Basin.
- The Cretaceous palaeo-shoreline is a target for further sedimentary manganese deposits.
- The Bootu Creek manganese deposit is a hydrothermally modified sedimentary deposit hosted in Palaeoproterozoic rocks of the Tomkinson Province.

Operating mines

Geological Province	Name	Annual Production	Resource	Company
Carpentaria Basin	GEMCO	3.9 Mt manganese concentrate (2023–24)	123 Mt @ 43.6% Mn (ROM) and 12 Mt @ 20% Mn (Sands)	South 32 Ltd

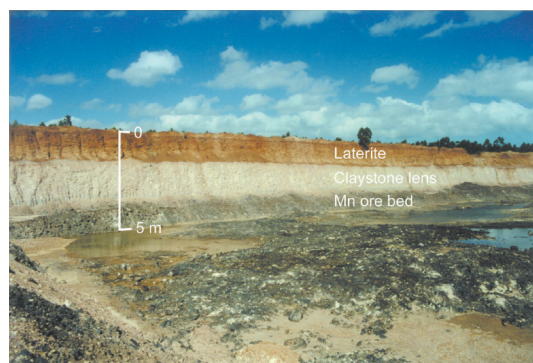
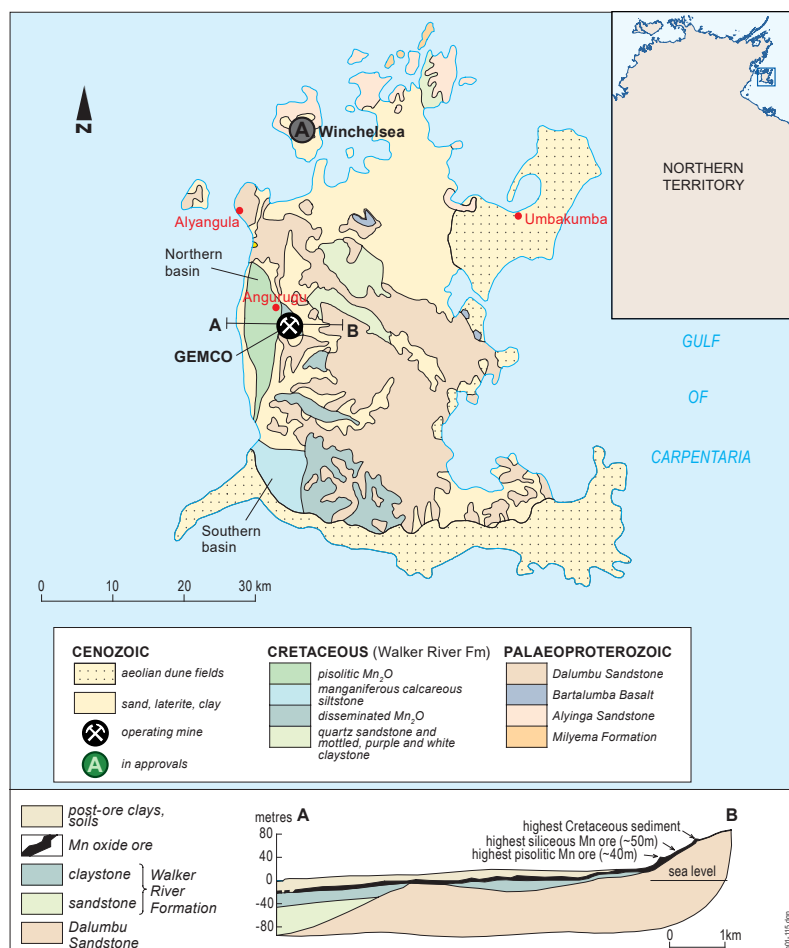
Care and Maintenance

Geological Province	Name	Resource	Company
Tomkinson Province	Bootu Creek	6.86 Mt @ 13.19% Mn	OM Holdings Ltd

Developing projects

In approvals process

Geological Province	Name	Resource	Company
Carpentaria Basin	Winchelsea	18.9 Mt @ 24.0 % Mn (From Draft EIS)	Winchelsea Mining Pty Ltd



Wedge-shaped claystone lens along northern wall of Quarry F1, Groote Eylandt.

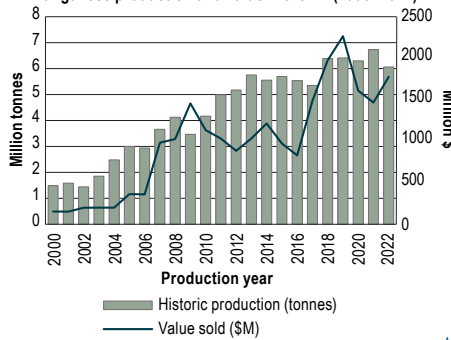
Reference: Northern Territory Geological Survey, Report 13.

Simplified geology of Groote Eylandt.

Reference: Northern Territory Geological Survey, Report 13.

Manganese in Australia's Northern Territory

Manganese production and value in the NT (2000–2022)



Total production
153 million tonnes



2023–24 production
3.9 million tonnes



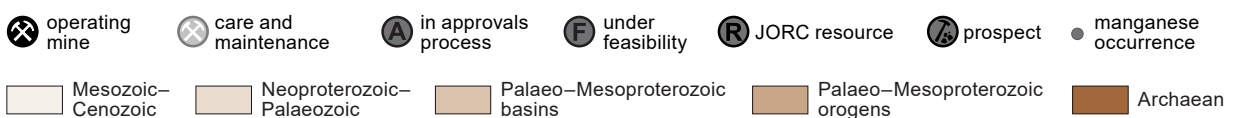
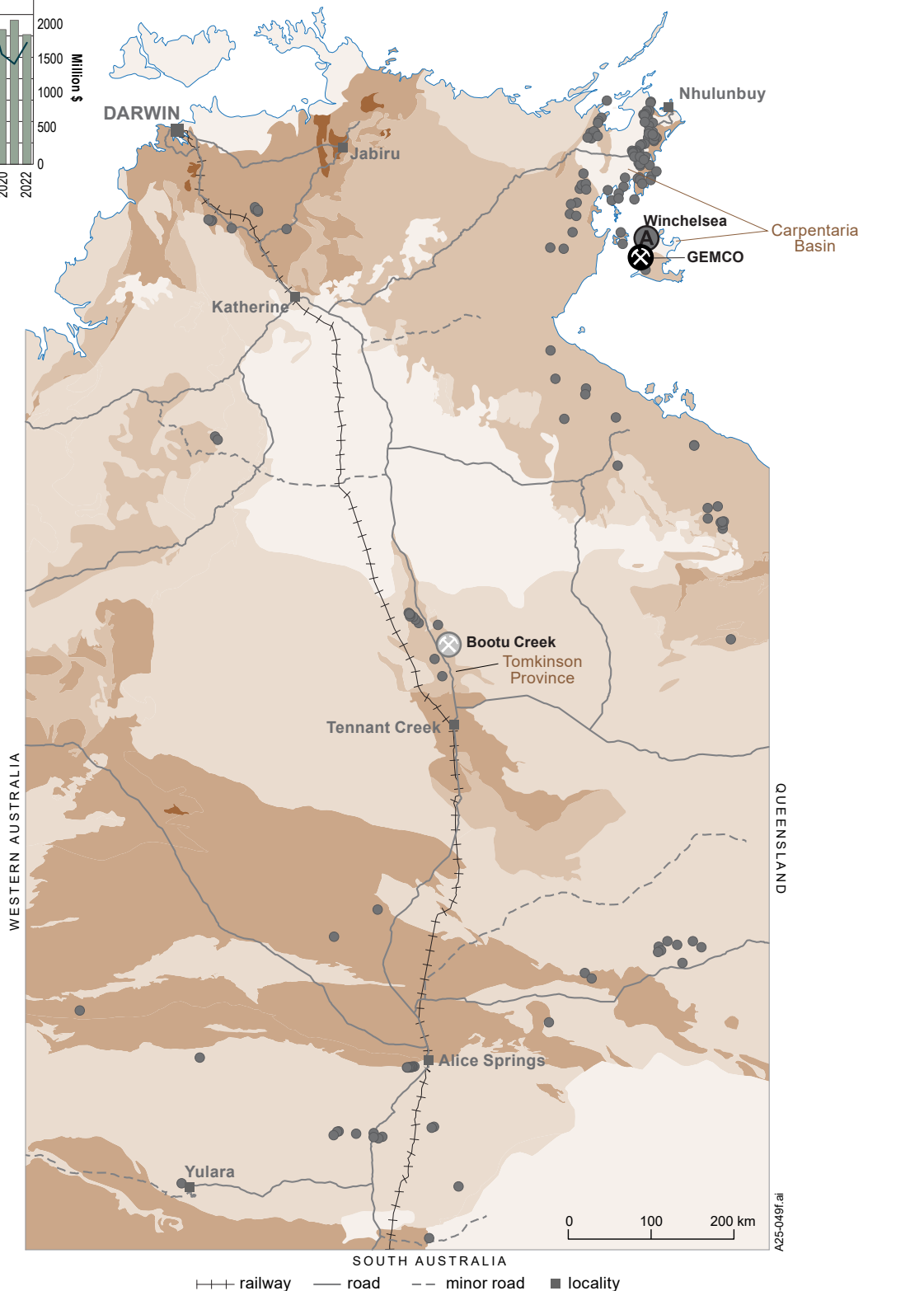
Remaining JORC resources
> 135 million tonnes of manganese ore



Value of production in 2023–24
\$993 million



Production ranking in Australia
1st



February 2025